

A photograph of a person standing on a concrete structure with several large black pipes. The person is wearing a white shirt and dark pants. The structure is situated on a sandy or muddy bank overlooking a large body of water. The sky is overcast and grey. The text is overlaid on the top half of the image.

Why Investments Won't Save the World or Solve Lado Sikaka's Problem

A Poromboke Perspective

Perspective Matters

Who Defines the Problem?



Drivers of Ecosystems Collapse

Intergovernmental Science Policy Platform on
Biodiversity & Ecosystem Services

LAND-USE CHANGE

Pollution

**Exploitation of
Organisms**

Invasive Species

Climate Change

Current Crisis; Past Investments



Paradigm Shift



Investment Vs. Debt Repayment

It's the Economy, Stupid

“A key constituent of sustainable pathways is the evolution of global financial and economic systems to build a global sustainable economy, **steering away from the current limited paradigm of economic growth.**”

-- United Nations IPBES, May 2019

Paradigm Shift

SOLAR PARKS

PROBLEM



SOLUTION



Energy is not just Electricity

India -- Million Mutinies or Campaigns for RE Landscapes

Mumbai-Ahmedabad Bullet Train Project

Hydrocarbon extraction, Cauvery Delta, Tamil Nadu

Coal Mining in Chattisgarh's Hasdeo Forest (1.7 L ha)

Tawang, Subansiri Dams -- Arunachal Pradesh

Urban Expansion Gandhinagar, Gujarat

Amaravathy Capital City, Andhra

Goa Coal Port

National Highway Expansion, Kodagu, Karnataka

புறம்போக்கு

poromboke [n.]

/por-um-pokku/

1. spaces reserved for shared communal uses

2. commons not private property

3. cannot build; cannot buy/sell

***4. a pejorative intended to demean or devalue a person;
worthless person or place***

Battle of Value & Worth



“LOW” VALUE - Poromboke
Unbuilt Infrastructure
Communal Resources
Hidden Assets

“HIGH” VALUE

Built Infrastructure
Private Property
Hidden Liabilities



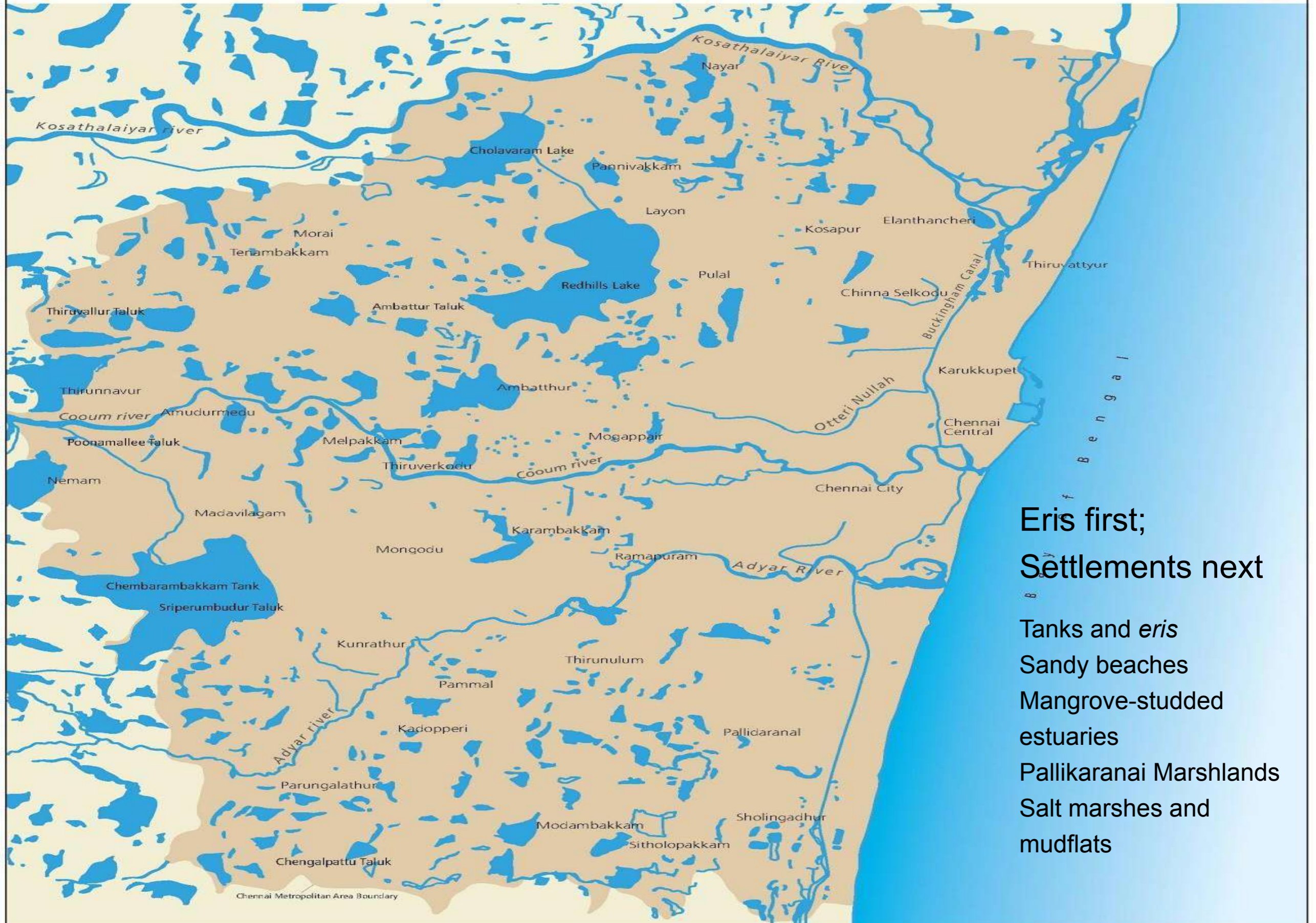
Poromboke & Disaster Vulnerability



Where Climate Change
Meets Land-use Change

MAP: WATERWAYS IN CHENNAI METROPOLITAN REGION

The entire region is literally flooded with waterbodies



Eris first;
Settlements next
Tanks and *eris*
Sandy beaches
Mangrove-studded
estuaries
Pallikaranai Marshlands
Salt marshes and
mudflats

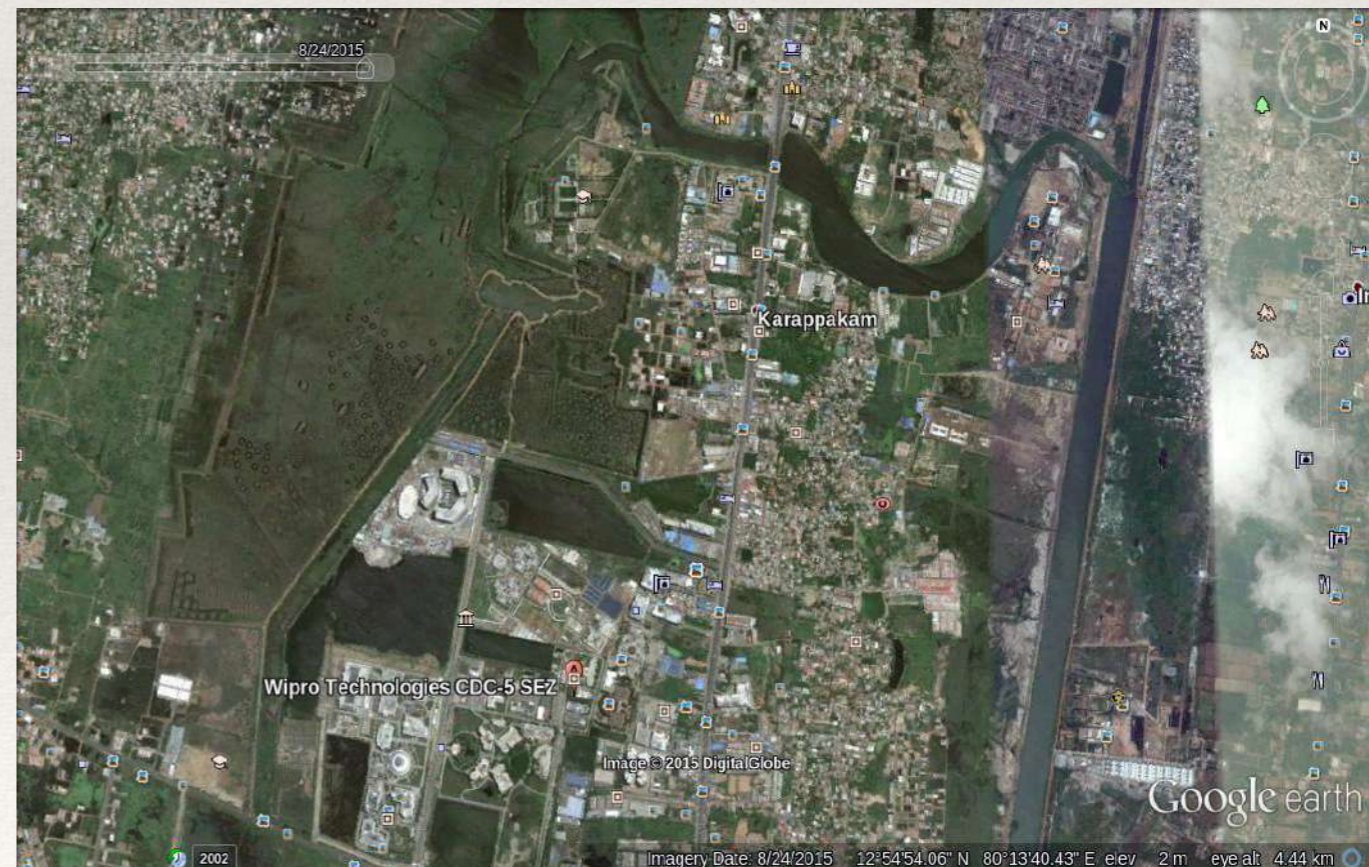
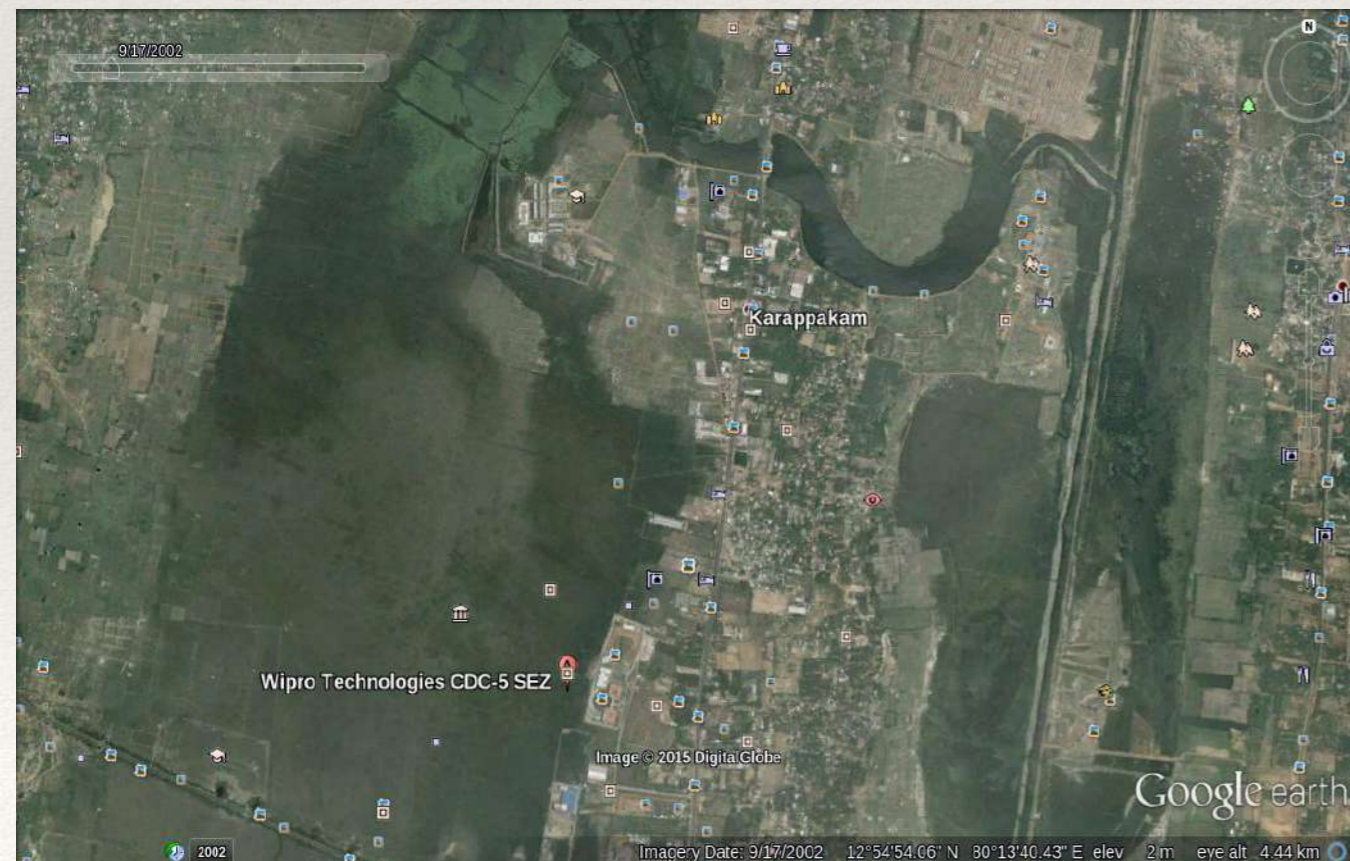
Creating New Value

Kazhuveli Poromboke becomes Sholinganallur ELCOT SEZ

Green(wash) Buildings

Mahindra Info Tech -- LEED Gold (Full points for Site Selection and Water Efficient Landscaping)

Wipro CDC0-5 -- LEED Gold



Siruseri Aquifer Recharge Zone



Credit: Google Earth

Growth = Decline

Source: Care Earth

Built Up Area

47 sq.km (1980)

152 sq km (1991)

250 sq km (2000)

402 sq km (2010)

Wetland

186 sq km

159 sq km

117.48 sq km

71.5 sq km

The City Grew By Encroaching on Wetlands

#MakeInIndia + #SmartCity + #Sagarmala

=

Un-Making India
ENNORE CREEK

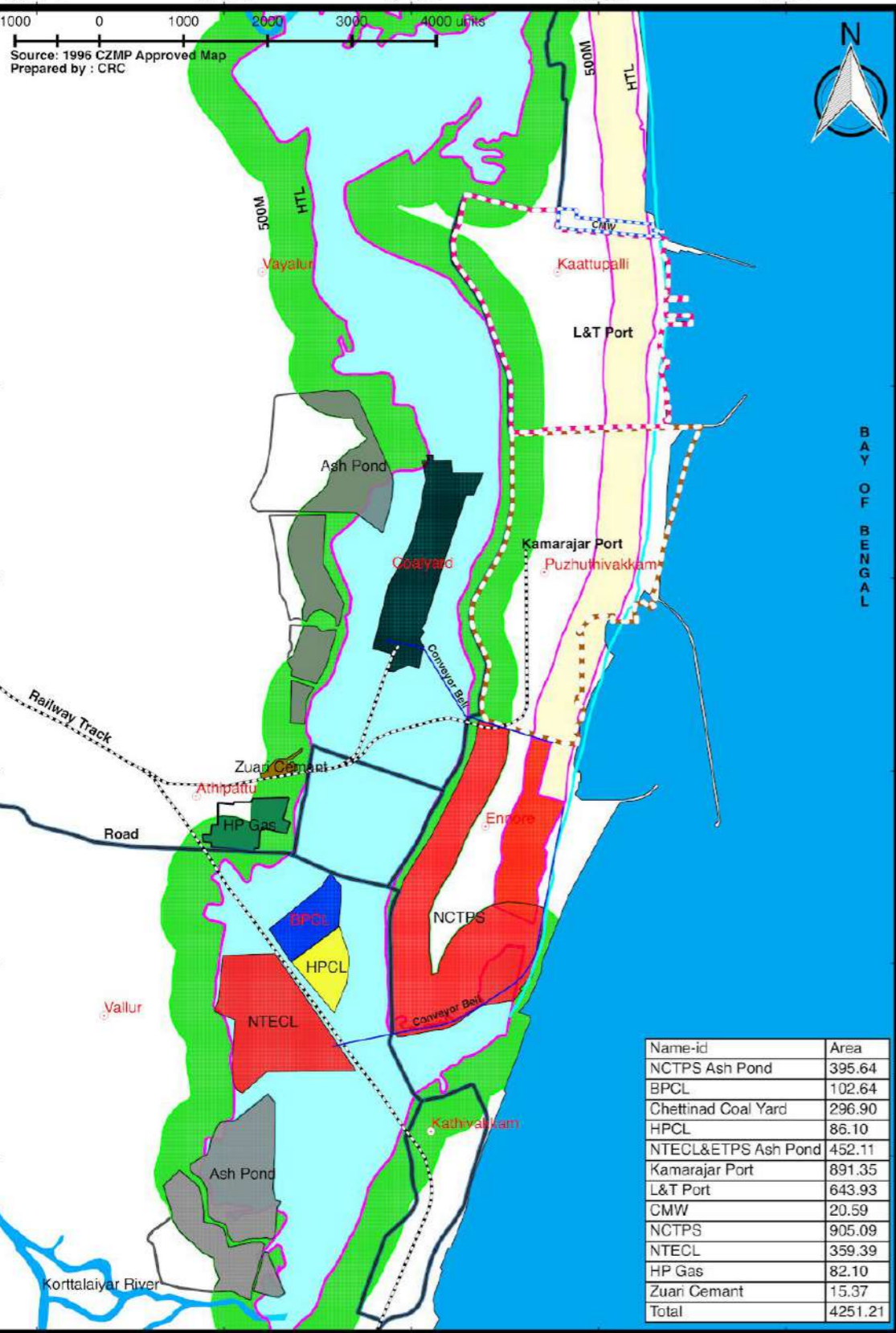


1996 CZMP PROJECT BOUNDARIES EITHIN CRZ-1 MAP

80°17'E 80°18'E 80°19'E 80°20'E 80°22'E

1000 0 1000 2000 3000 4000 units

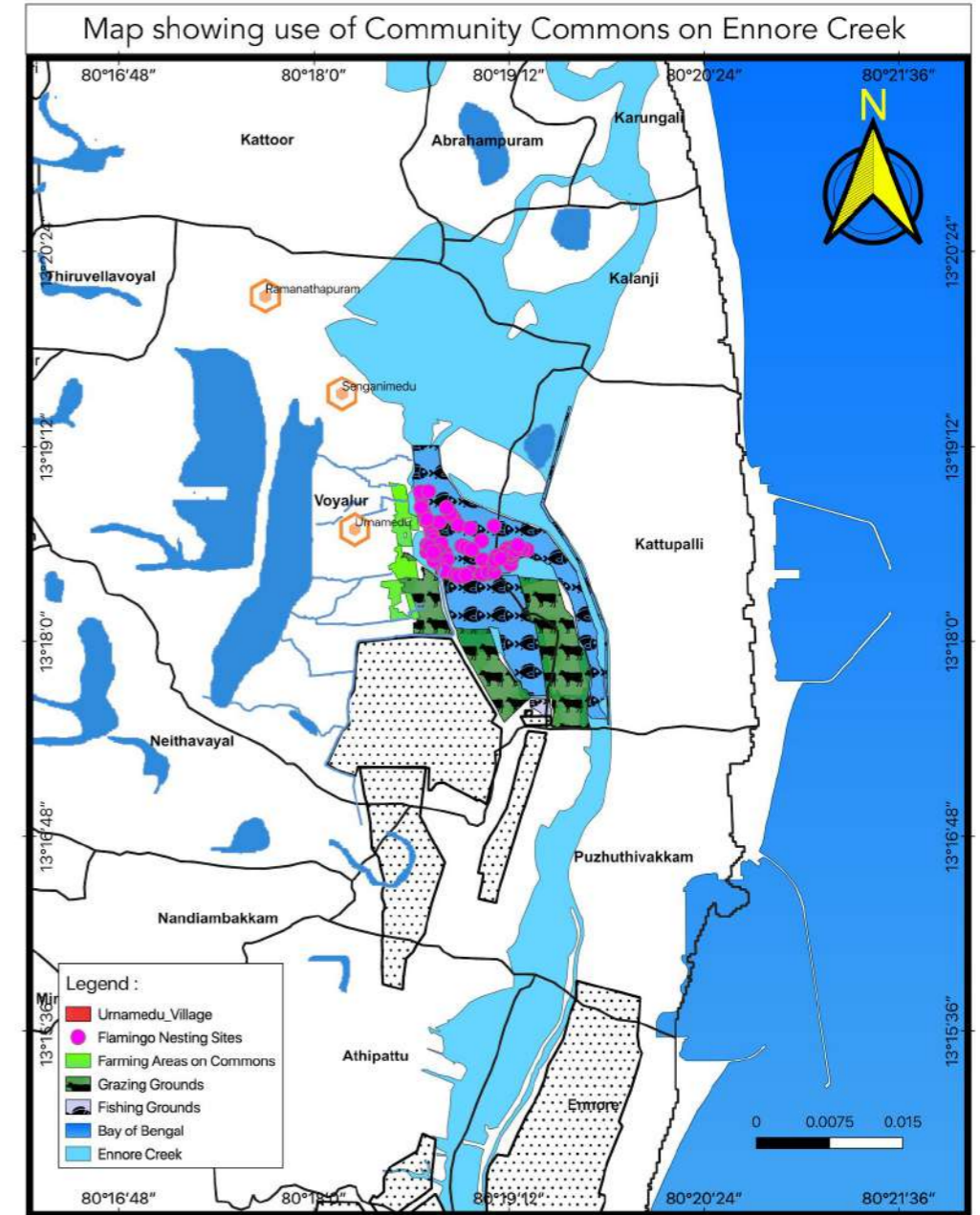
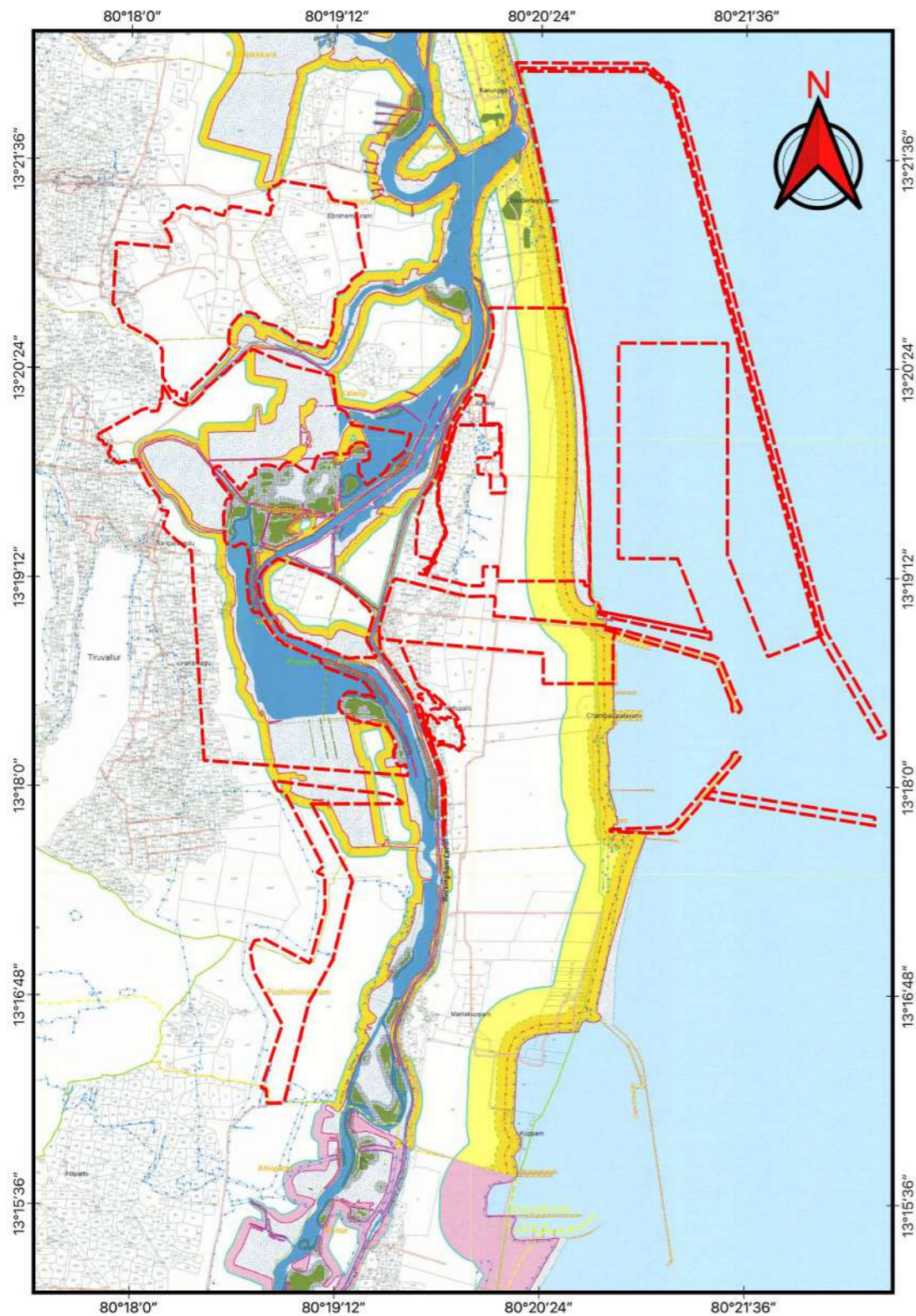
Source: 1996 CZMP Approved Map
Prepared by : CRC



Name-id	Area
NCTPS Ash Pond	395.64
BPCCL	102.64
Chettinad Coal Yard	296.90
HPCL	86.10
NTECL&ETPS Ash Pond	452.11
Kamarajar Port	891.35
L&T Port	643.93
CMW	20.59
NCTPS	905.09
NTECL	359.39
HP Gas	82.10
Zuari Cement	15.37
Total	4251.21



Adani Port - Kattupalli



Prepared by: Villagers

Source: CZMP 2018 and Bhuvan

Kattupalli is RE



False Solutions

Green Capitalism

Techno Fixes

Growth Addiction

Fossil Fuel Addiction



**False Solutions Are
Discriminatory**

**Possible only in Unequal & Racist
Societies**

False Solutions; Real Problems

- Entry as Quick-fixes during Crises
 - Postpone real solutions
- Low-effort -- Low Hanging Fruit

Identifying False Solutions

- Complex Problem - Simple Solution
 - Externalise -- Omlette/Egg
- Maintain Status Quo (Wasted Energy; Overconsumption)
- Technofixes (Replace Local, Democratic, Wise interventions)

The Way Forward?

Revalourise the Poromboke

Reframe the Problem; Redefine Expertise

Question Economic Growth

Grow a Forest; Stop a Mine

Rob a Bank

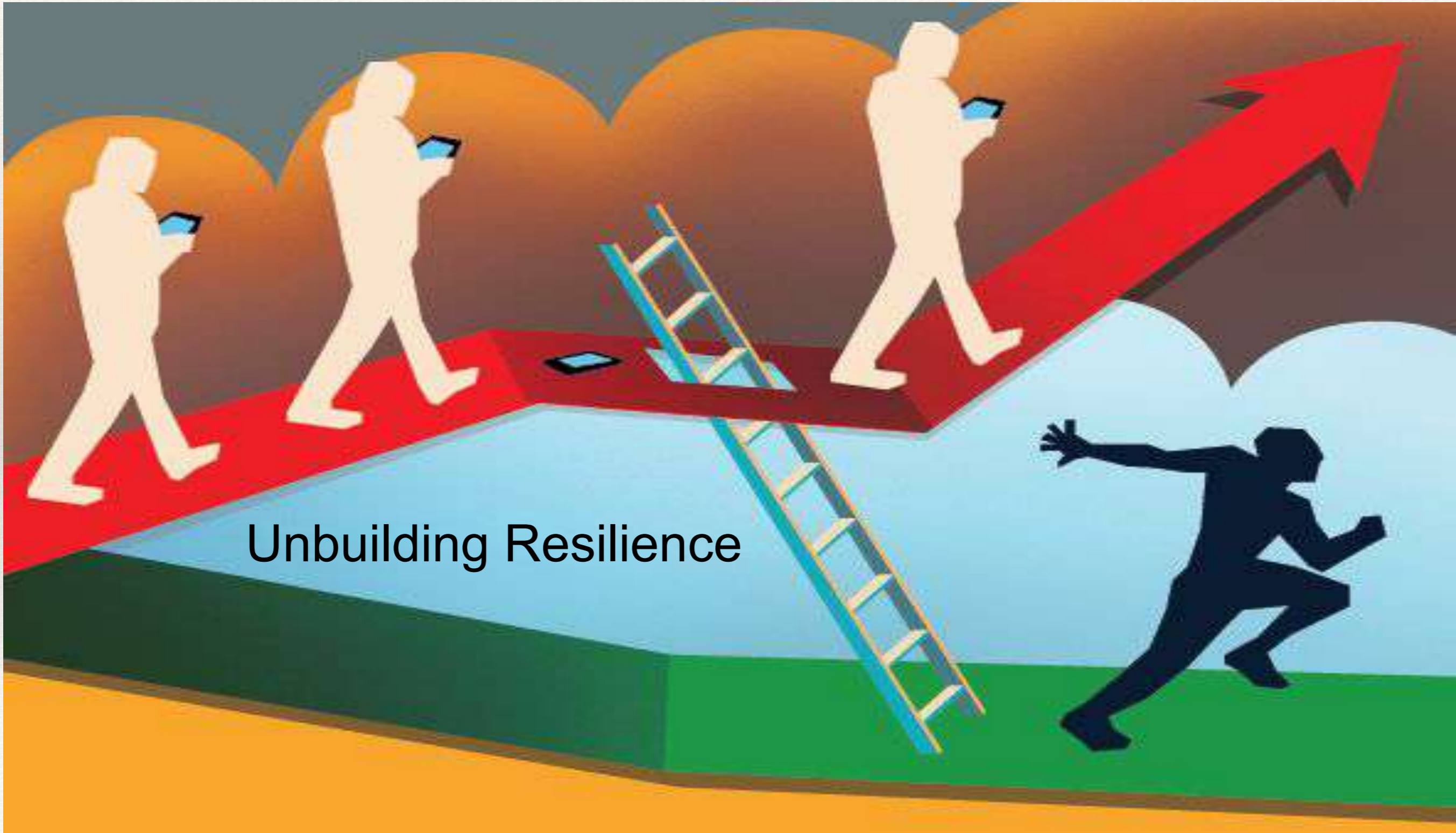
Build a Community; Unbuild a City

Write a Poem; Paint a Revolution

Retell History; Rewrite the Future

Support a Community Struggle; Save a Landscape

Paved Earth V. Open Earth



Unbuilding Resilience