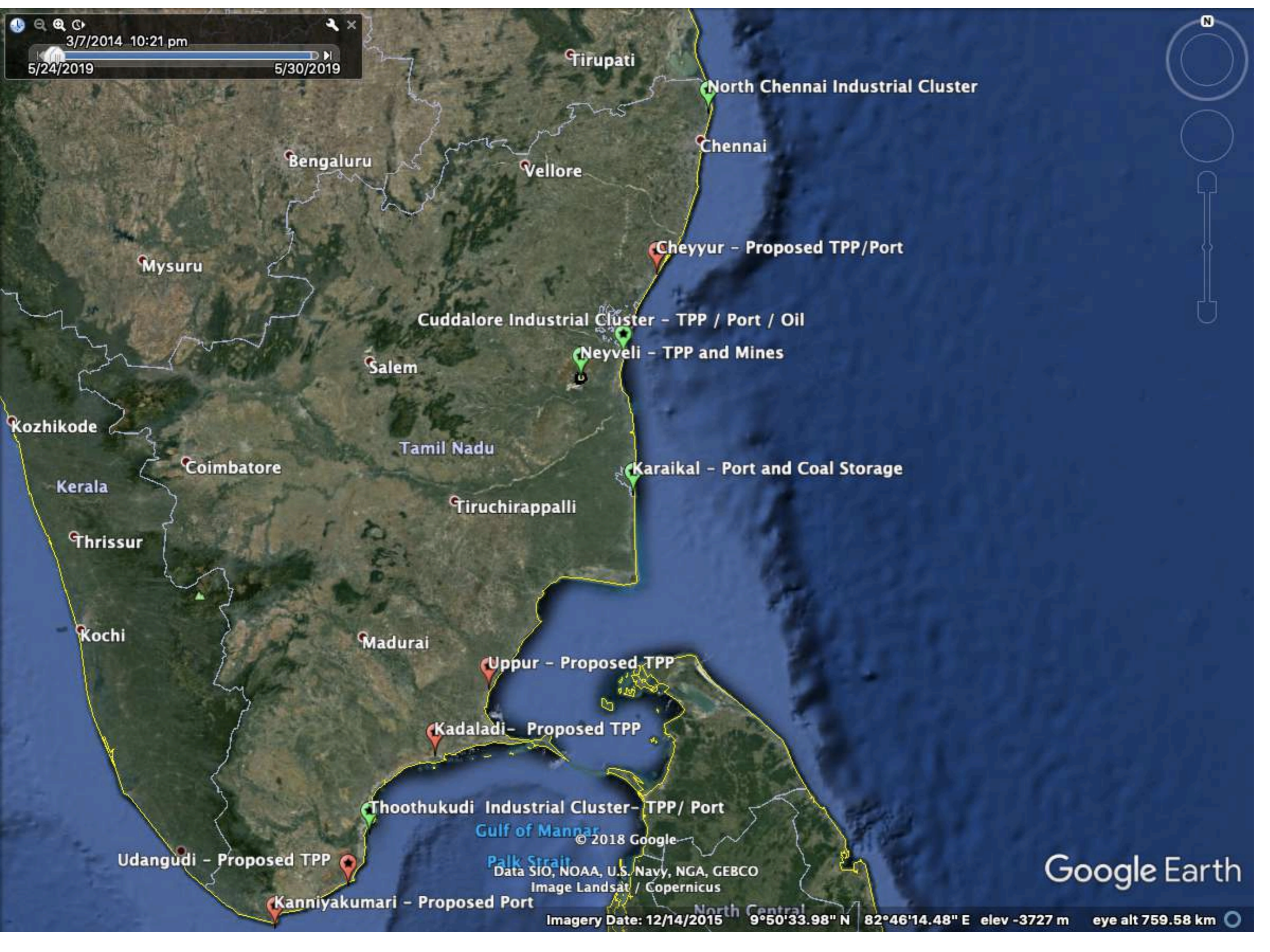




COASTAL COAL CAPITAL STORIES FROM TAMILNADU, INDIA



Tirupati

North Chennai Industrial Cluster

Chennai

Bengaluru

Vellore

Cheyur - Proposed TPP/Port

Mysuru

Cuddalore Industrial Cluster - TPP / Port / Oil

Neyveli - TPP and Mines

Salem

Tamil Nadu

Karaikal - Port and Coal Storage

Kozhikode

Coimbatore

Tiruchirappalli

Kerala

Thrissur

Kochi

Madurai

Uppur - Proposed TPP

Kadaladi - Proposed TPP

Thoothukudi Industrial Cluster - TPP / Port

Gulf of Mannar

Palk Strait

© 2018 Google

Data SIO, NOAA, U.S. Navy, NGA, GEBCO
Image Landsat / Copernicus

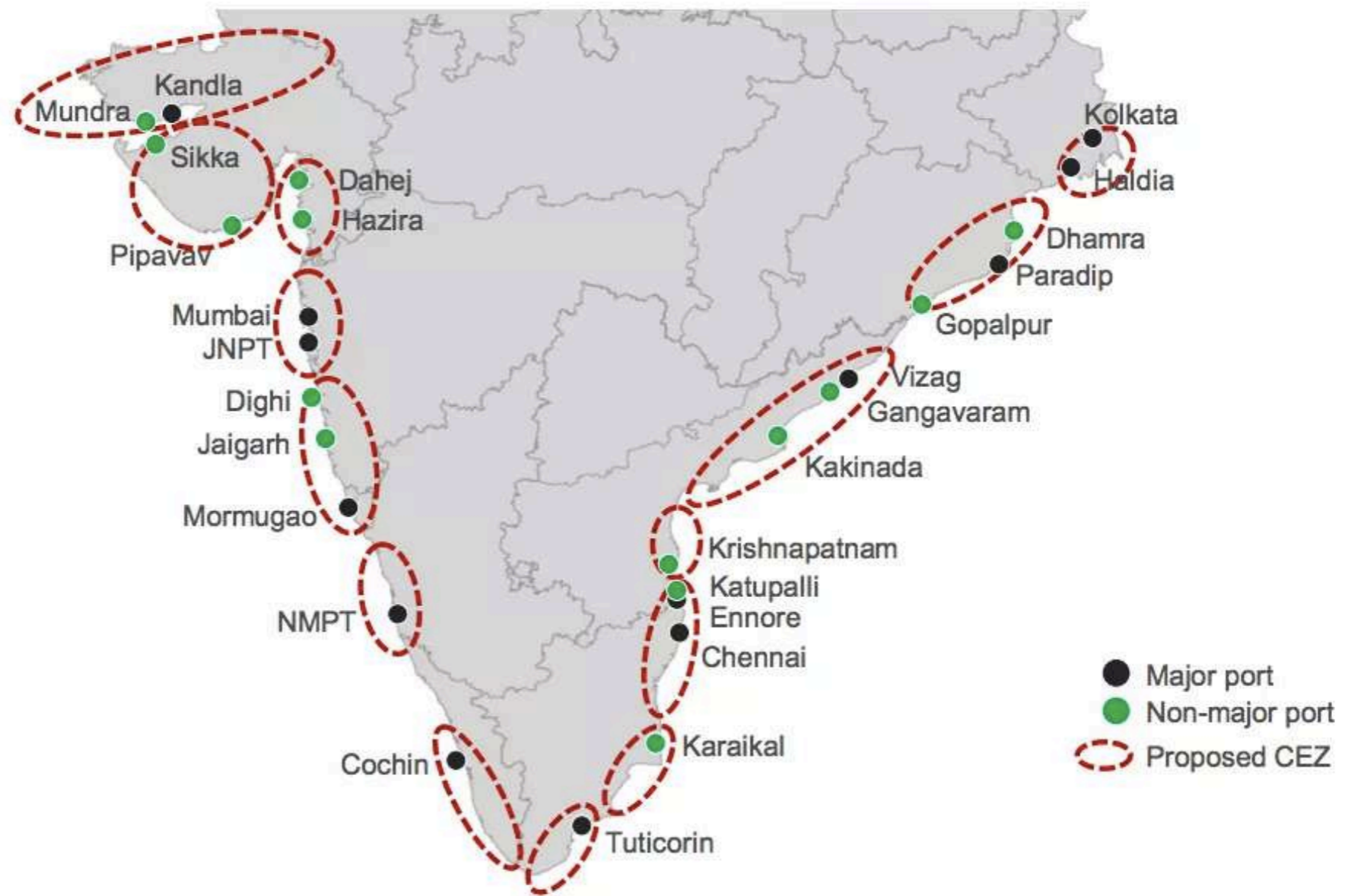
Google Earth

Udangudi - Proposed TPP

Kanniyakumari - Proposed Port

SAGARMALA - CHAIN OF PORTS PORTS AS A DRIVING FORCE FOR COASTAL DEVELOPMENT

Proposed coastal economic zones



COASTAL MARINE FISHERIES SUPPORT MORE THAN
10,00,000
FISHERS FROM OVER 600 FISHING VILLAGES IN
TAMILNADU



LAND USE CHANGE AND CONTAMINATION



Photo: Vishvaja Sambath

WATER POLLUTION



Photo: CRC

AIR POLLUTION



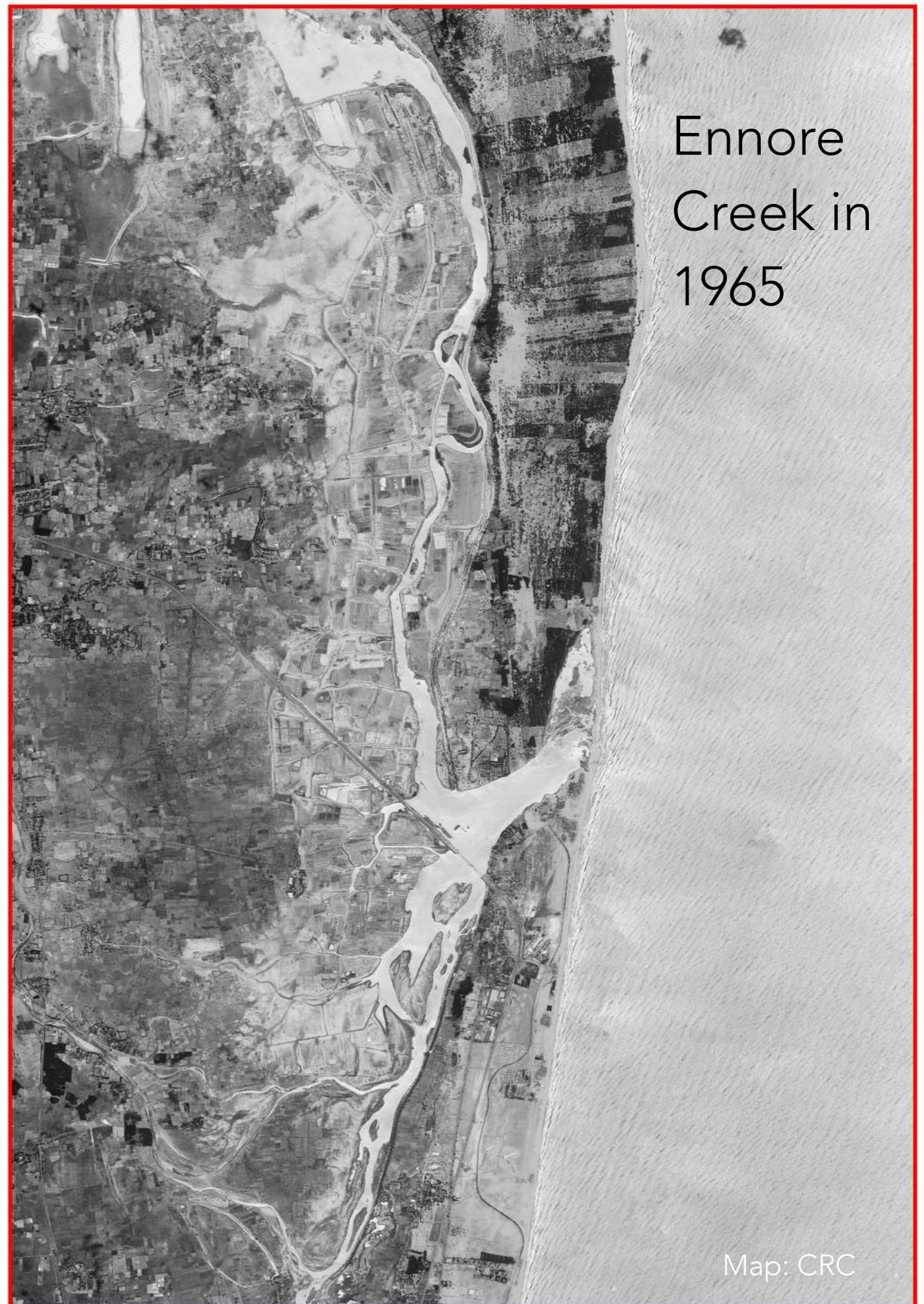
Photo: Amirtharaj Stephen

HEALTH IMPACTS OF OUR COAL BASED ENERGY CHOICES

The background of the slide features a stylized illustration of a coal power plant. On the right side, several tall, dark grey smokestacks rise vertically, emitting thick, billowing plumes of smoke in shades of green and yellow. The smokestacks are connected to a complex of industrial buildings and structures at the base. The overall scene is set against a dark blue background, suggesting a clear sky or a specific time of day. The illustration is rendered in a clean, modern style with flat colors and sharp lines.

- Ecological Health
 - Land Use Changes
 - Polluted Landscapes
 - Low Ecological Productivity
- Human Health
 - Mental Health - Stress, Anxiety, Depression
 - Physical Health - Respiratory, Cardio-Vascular, Neurological, Cancer

ENNORE CHENNAI'S SACRIFICE ZONE



Ennore
Creek in
1965

Map: CRC

TAMILNADU'S COAL HUB

Stream from Aranaiyar River

Katupalli Port

Ennore SEZ Thermal Power Station

Chettinad Coal Yard

Kamarajar Port

North Chennai Thermal Power Station

BPCL

NCTPS Expansion

NTPC Vallur Thermal Power Station

HPCL

Vallur TPS Ash Pond

Streams from Kosasthalaiyar River

Ennore Thermal Power Project Replacement

ETPS Annexe

- Operational Industries
- Industries Under Construction
- Ports Under Expansion



Photo:CRC



Photo:CRC



Photo:CRC

ECOLOGICAL HEALTH CRISIS

Livelihoods Destroyed Due To High Levels of Pollution In Fish

	Lead (0.30 Mg/Kg)	Cadmium (0.05 Mg/Kg)
Shellfish	50X	2X
Prawn	44X	24X
Fish	22X	18X



SEPPAKKAM - A Village In Ash

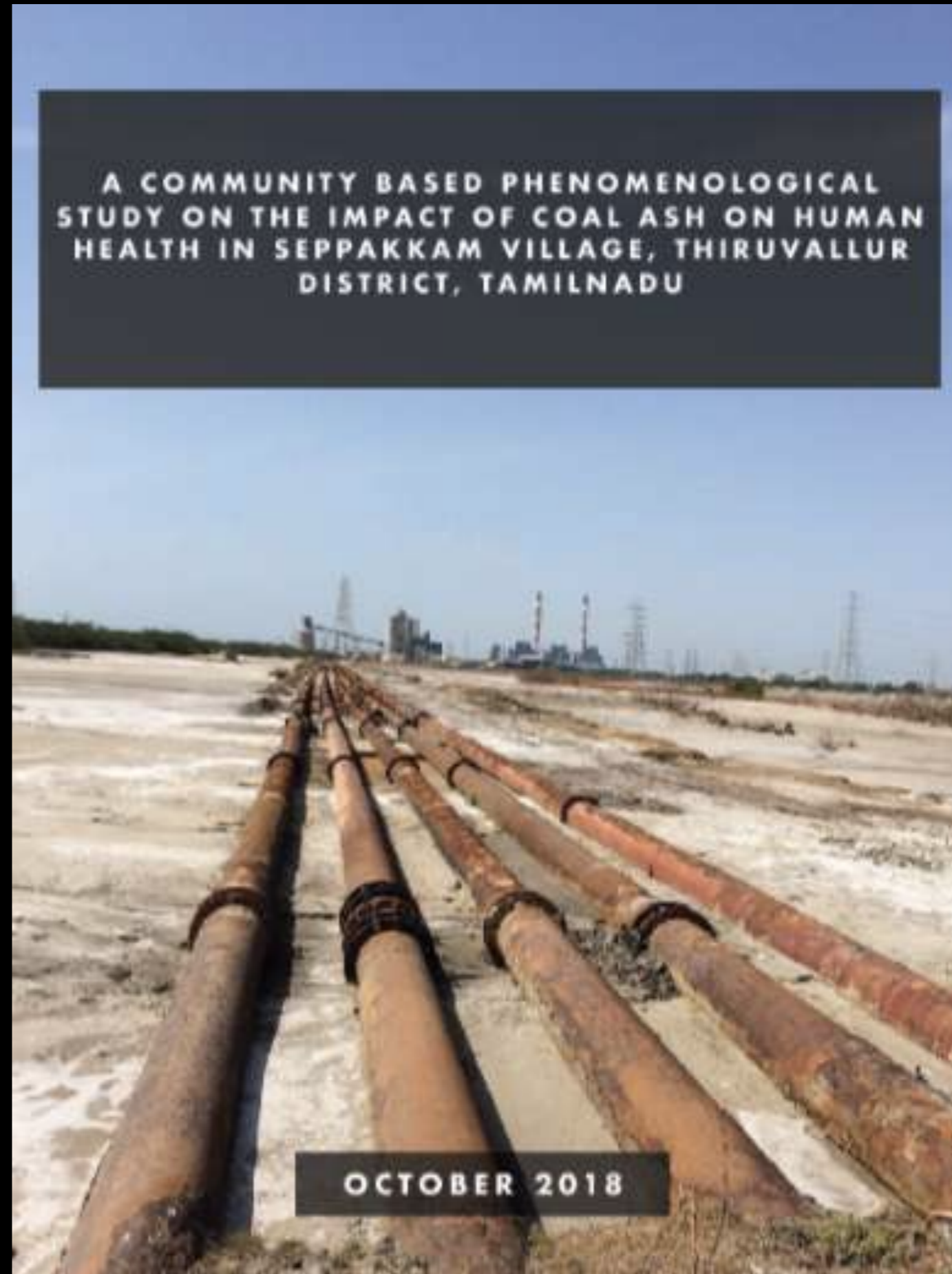


KEY FINDINGS

- Residents face severe illnesses - respiratory, skin
- No basic facilities - Drinking water, health care facilities or public transportation

“If we dry anything outside it will get covered with ash and dust in no time. If we go and stand on the road for even a short while, we will get covered with ash and dust”

- Resident of Sepakkam





KURUVIMEDU- The Sparrow Hill



Photo: Sajan Ponappa



Photo: Greg McNevin

KEY FINDINGS

- Dry cough
- body pain,
- loss of appetite
- breathlessness
- skin allergies
- A SITE OF PUBLIC HEALTH CONCERN

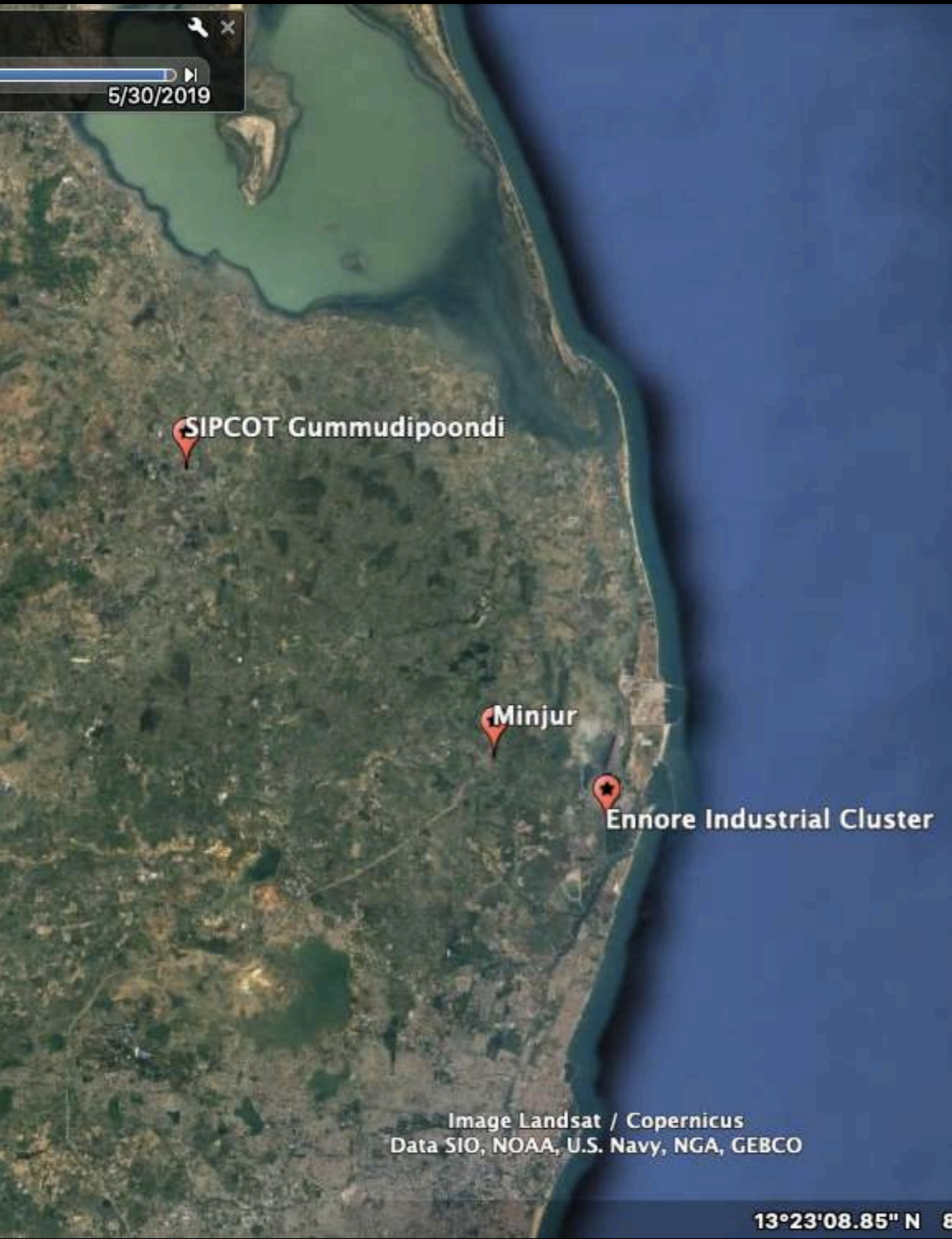
Report of the Health Camp at Kuruvimedu, Ennore



2017

Huma Lung Foundation & Community Environmental Monitoring

MINJUR - Collateral Damage



PRELIMINARY HEALTH ASSESSMENT IN MINJUR

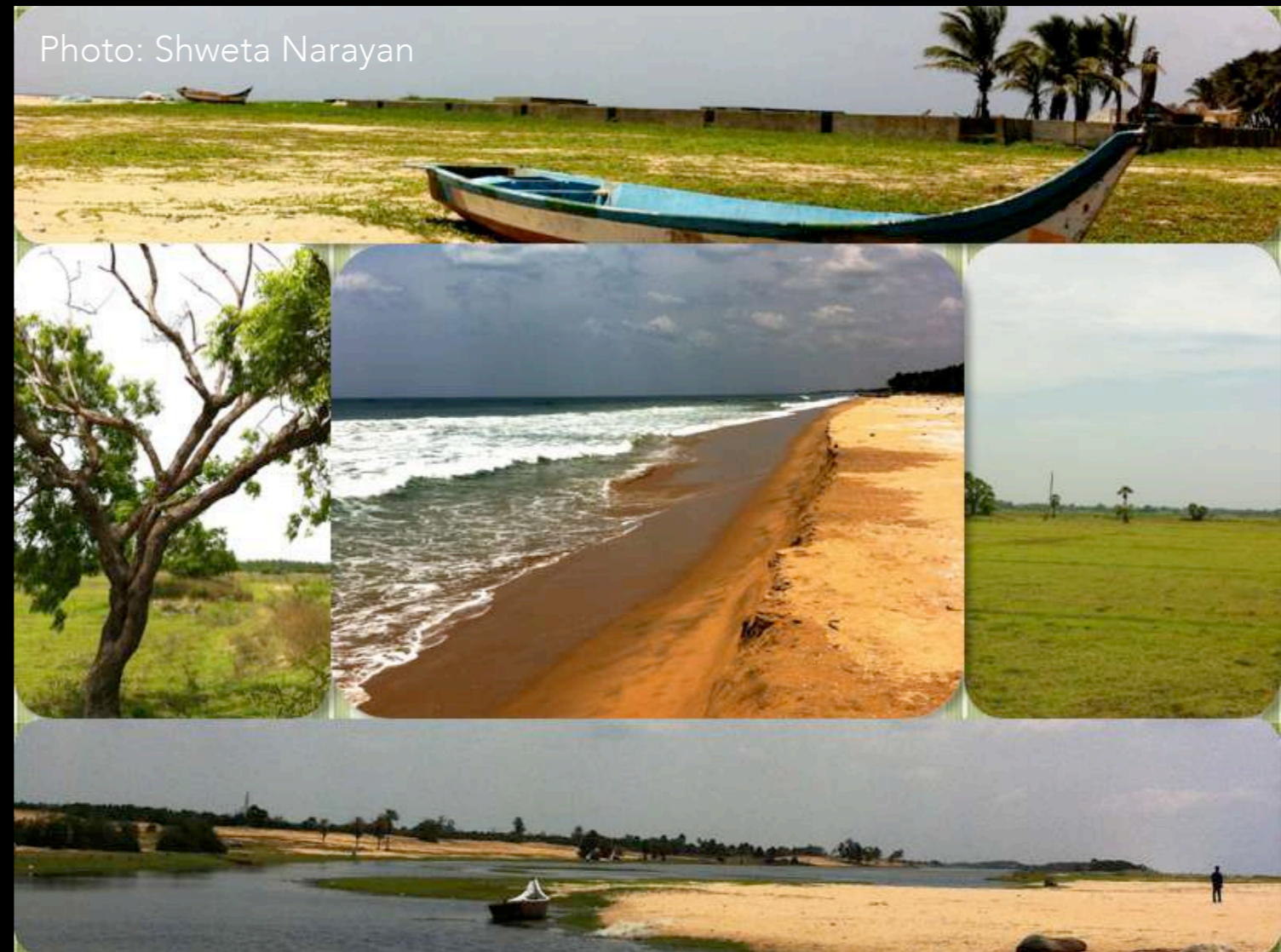
- Residents, especially street vendors faced pollution load from trucks carrying coal and coal ash
- Respiratory illness and skin allergy was reported.



BUT ARE FOSSIL FUEL THE CAUSE OF HEALTH DECLINE IN ENNORE?

CASE OF CHEYYUR

- PROPOSED SITE OF 4000 MW UMPP
- BASELINE HEALTH STUDY IN 13 VILLAGES
- 266 PEOPLE SURVEYED
- ONLY 1% REPORTED CHRONIC ILLNESSES COMPARED TO MORE THAN 15% IN ENNORE



ONLY DIFFERENCE - NO POLLUTING INDUSTRIES IN CHEYYUR

COAL = CLIMATE EFFECTS

COAL = LOCAL EFFECTS

- Local Landscapes Transformed - Undoing Natural Climate Resilience
 - Erasure of Local Economies - Livelihood Costs Externalised
 - Human Costs made invisible - Health Costs Externalised
 - Coal industries have only impoverished local communities instead of improving quality of life
- 